



CAMBRIDGE
International Education

Cambridge Early Years Centre

Winter Holiday Homework

Dear Parents,
Greetings from PPS!

To help our little learners enjoy a joyful and meaningful winter break from December 25, 2025 to January 1, 2026, we have planned simple, fun-filled holiday activities for our Pre-Primary students. These activities are designed to promote learning through play, creativity, and family bonding.

The holiday tasks focus on developing basic skills, imagination, fine motor abilities, and joyful learning experiences, keeping in mind the age and learning needs of our young learners. The activities are light, engaging, and meant to be enjoyed together with family support.

We request your kind support in guiding your child to complete the activities and submit them by January 12, 2026.

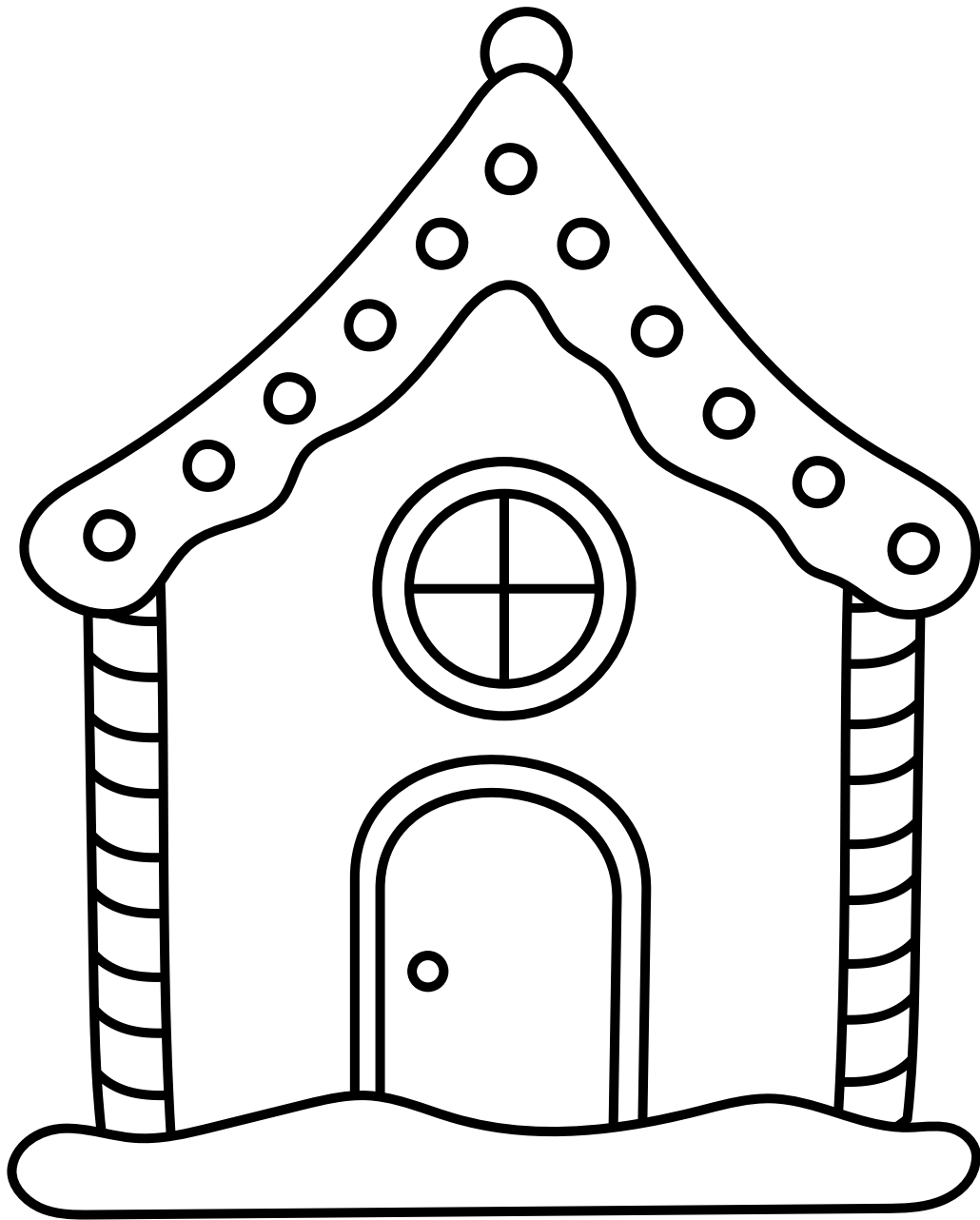
Let us work together to make this winter break a happy, playful, and enriching experience for our Early Years children. Wishing you and your family a warm, joyful, and restful holiday season!

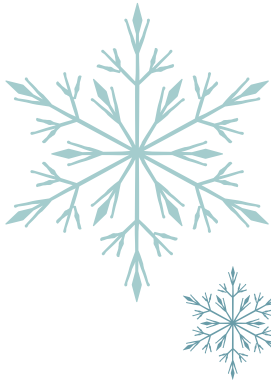
regards,

Ms. Ashu Wadhwa
Principal
People's Public School, Bhopal



COLOUR THE HOUSE.



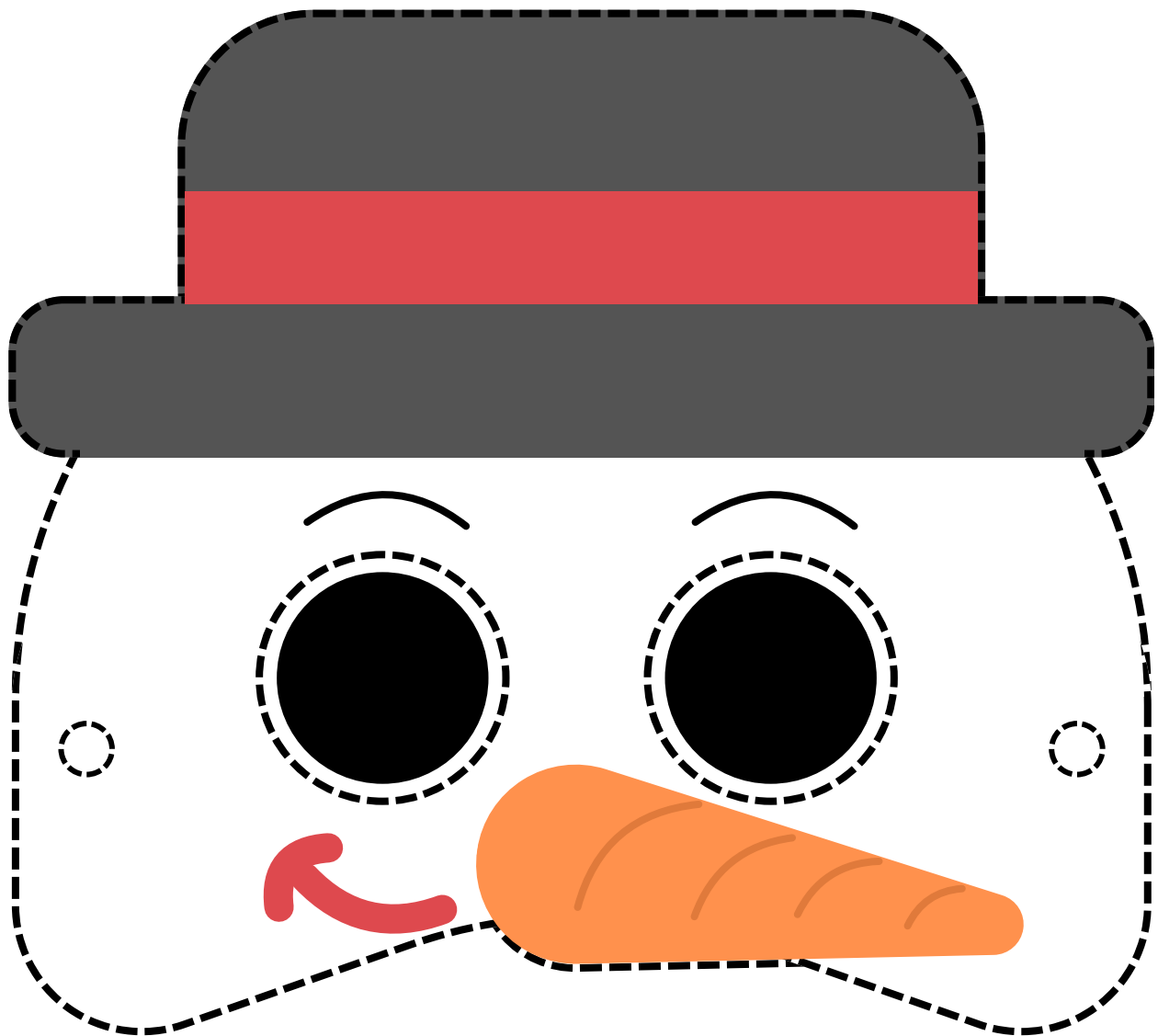


WINTER

SNOWMAN MASK

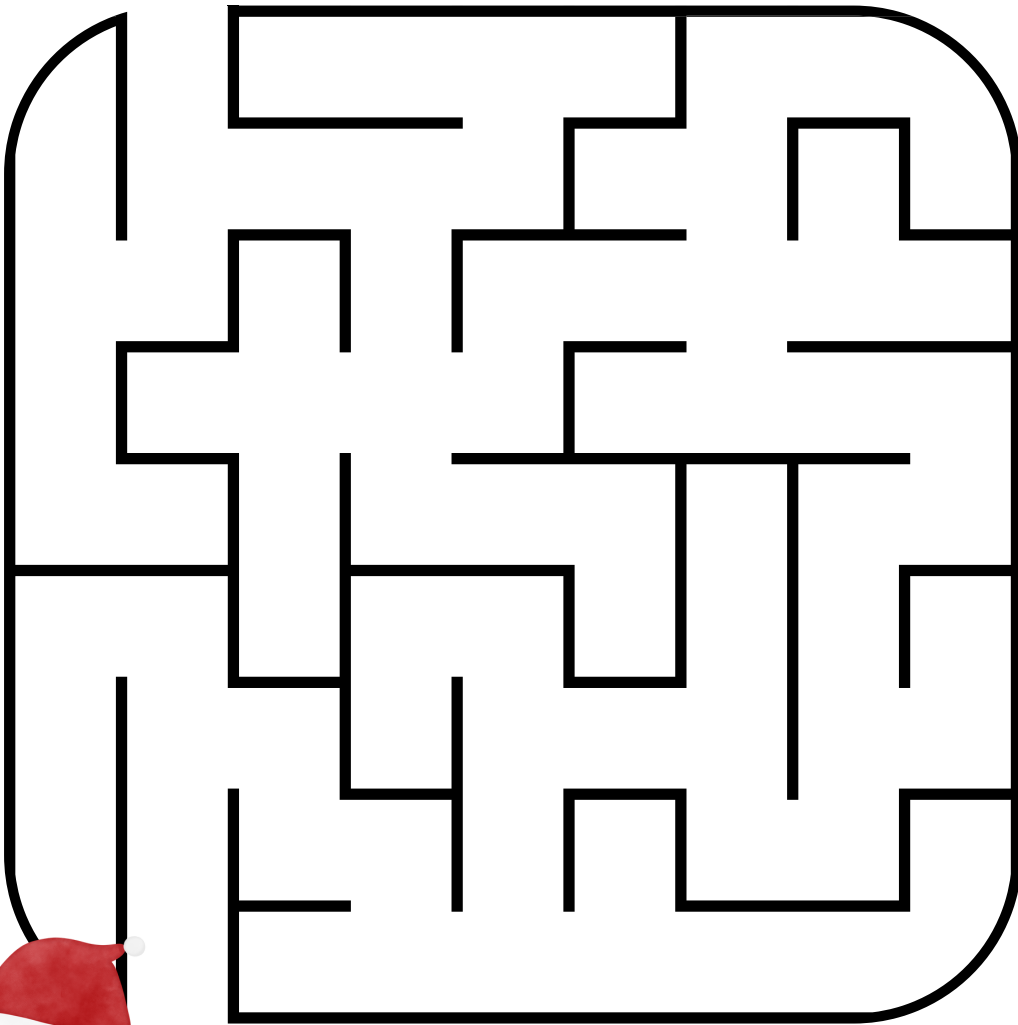


Cut out the snowman mask outline
and use an elastic string or ribbon
to secure the mask around your head.



CHRISTMAS MAZE

Help Santa find the way through to reach
his gifts.



Christmas Counting


Count the items in the box and color the correct answer.



5

3


7



3

2


4



5

6


4



2

1


7



9

4

3



4

9

7

COLORFUL SHAPES

Color the shapes correctly.

